

Custom
11/15

PLANT ORDER

YC030809
 FEATHERLITE, INC.
 CRESCO, IA
 PHONE: 800-800-1230
 FAX: 319-547-6100

SO NUMBER..... 96992
 SO DATE..... 09/22/99
 PRICE..... 15
 SCHEDULE DATES..... 12/88/99
 PAGE..... 1

NOTES:

New Specs 10/21/99

ITEM	UM	QTY	DESCRIPTION
4950-8623		1.00	4950 COACH TRAILER
CFG 23			WIDTH: 8.6 LENGTH: 23.0 HEIGHT: 10.1
4FG-L0233-7			AXLE# <i>0-4954610-11-12</i>
CONSISTING OF FOLLOWING OPTIONS:			
49508623B	EA	1.00	4950 8'6" X 23' X 10'10" DRAG BASE
1860	EA	3.00	AXL 6K RUB TOR W/ELEC BRAKE
1987	EA	1.00	AXL 102" W
5556	EA	7.00	TIRE LT235/85R16 10PLY RATED RAD G159
8075	EA	1.00	CARRIER SPARE TIRE
5290	EA	7.00	WHL 16" 8H STL
5297	EA	6.00	SIM 16" 8H SINGLE ILO HUBCAPS CHANGES WHL CODE TO 5290
7957	EA	1.00	HITCH DOTSCO
8470	EA	1.00	SCALE FOR HITCH
6248	EA	1.00	JACK STABILIZER ALUM PIN TYPE (PR)
8036	EA	1.00	JACK KIT SNGL CYLINDER HYDRAULIC DOES NOT INCLUDE BATTERYKIT-SEE OPTION 7413
2295	EA	2.00	LIGHT 48" DBL FLUORESCENT FIX W/DIFFUSER
7305	EA	14.00	LIGHTS MARKER H3-45
7307	EA	6.00	LIGHT GM AUXILIARY LIGHT
7307TEXT			ON RIGHT & LEFT SIDE OF TRL, ALL LIGHTS ON 2 SWITCHES-1 FOR CS, 1 FOR SS.
7313	EA	1.00	TO INSTALL DISCONNECT SWITCH/BREAKER FOR BOTH BATTERIES (MODEL 4950)
7313TEXT			FOR BOTH BATTERIES
7400	EA	12.00	LIGHT CLEARANCE
7401	EA	12.00	LIGHT DOME
7404	EA	4.00	LIGHT STOP/TURN
7405	EA	4.00	SWITCH
7405TEXT			1 FOR EA SIDE OF GM LIGHTS
7455	EA	1.00	PLUG 7-WAY INC 7 WIRE CABLE IN TRL (SEMI)
7936	EA	23.00	FLOORING .125 TREADPLATE
3353	EA	1.00	RAMP REAR FULL HT&W CABLE ASST W/PRES LATCH ILO 1500 STD REAR DOOR
2562	EA	1.00	RAMP SIDE 58"W/24"X82" HD 2"DBL SEAL DOOR
7329	EA	4.00	HANDLES FUGOCAR
7202	EA	1.00	LADDER
7202TEXT			ONLY A 4" SPACE BETWEEN LADDER & WALL
2208	EA	73.00	LINE WHITE .040 ALUM ZIP SCREWED
2362	EA	73.00	INSULATE WHITE STYROFOAM SIDEWALLS, ENDWALLS
2535	EA	1.00	INTERIOR LINING ILO RIVETTED

PLANT ORDER

YC030809
 FEATHERLITE, INC.
 CRESCO, IA
 PHONE: 800-800-1230
 FAX: 319-547-6100

SO NUMBER..... 96992
 SO DATE.....09/22/99
 PLANT..... 15
 SCHEDULE DATE.....12/06/99
 PAGE..... 2

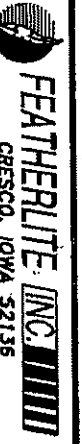
NOTES:

ITEM	UM	QTY	DESCRIPTION
2287	EA	1.00	SHORELINE 30 AMP, 2 SPACE PANEL BOX CORD STORAGE BOX & ACCESS DOOR
2290	EA	3.00	RECEPT DUPLEX 110V
2297	EA	1.00	POWER CONVERTER 30 AMP (W/BATTERY, BATTERY BOX AND FUSE PANEL, SWITCH)
7301	EA	1.00	SWITCH BREAKAWAY W/BATTERY
7413	EA	1.00	BATTERY PKG W/RECHARGE LEADS
6322	EA	1.00	BEAVER TAIL
2630	EA	1.00	PAINT (1) COLOR CUSTOM
3954	EA	1.00	SHEET WHITE (9000 & 1600 MODEL ONLY)
2446	EA	1.00	BACKUP CAMERA (COLOR) W/BACKET & WIRE
2477	EA	15.00	TIE DOWN TRACK AIRLINE
2539	EA	8.60	CABINET WT ALUM OVRHD 12" D X 24" T P/FT
2560	EA	1.00	AIRLINE TRACK TO BE WELDED & BOLTED
2564	EA	1.00	STORAGE/WARDROBE CABINETS IN FRONT PART OF MODEL 4950 & 4951
2565	EA	1.00	ENGINE COMPARTMENT W/2 DOORS UNDER STORAGE/WARDROBE CAB. IN MODEL 4950 & 4951
5243	EA	2.00	WHL CHOCK
7270	EA	9.00	MEZZANINE DECK (FOR MODEL 4950) 82" ABOVE THE FLOOR
7270TEXT			
7271	EA	1.00	FLIP UP DOOR ON MEZZANINE DECK (FOR MODEL 4950)
7373	EA	1.00	TRANSPORT CHAIN P70 W/SLIP HOOK
7967	EA	62.00	SHEET SIDE EXT. ALUM TAPED .090
7968	EA	1.00	LIFT CABLE SINGLE CYLINDER W/O LINING
8176	EA	1.00	STEP CAMPER SLIDE OUT ALUM
8452	EA	2.00	CARGO POLES
8455	EA	1.00	PREFIT AND PAINT ALUM FENDERS
8483	EA	2.00	FABRIC FLAP OVER HINGES
4016	EA	5.50	A TRACK P/FT VERTICAL STL
6255	EA	1.00	TIE DOWN SWIVEL "D" RING
2391	EA	1.00	VENT 14" X 14" JENSEN POWER LIFT ROOF
2478	EA	8.00	HRDW FOR AIRLINE TIE DOWN TRACK
7281	EA	1.00	TO RUN ALL CONNECTION PLUGS THROUGH VERY FRONT RIGHT SIDE OF TONHUE (NOT THE TOP OF PLATFORM) FOR MODEL 4950
***** END OF DETAIL FOR STANDARD OPTIONS *****			
7953	EA	1.00	LIFT CABLE SINGLE CYLINDER HYD (MOTORCYCLE) W/LINING
7953TEXT	EA		ALUM TUBING SUPPORT, MAKE LIFT 14" W/MOTORCYC

REMOVED

MORE ON NEXT PAGE

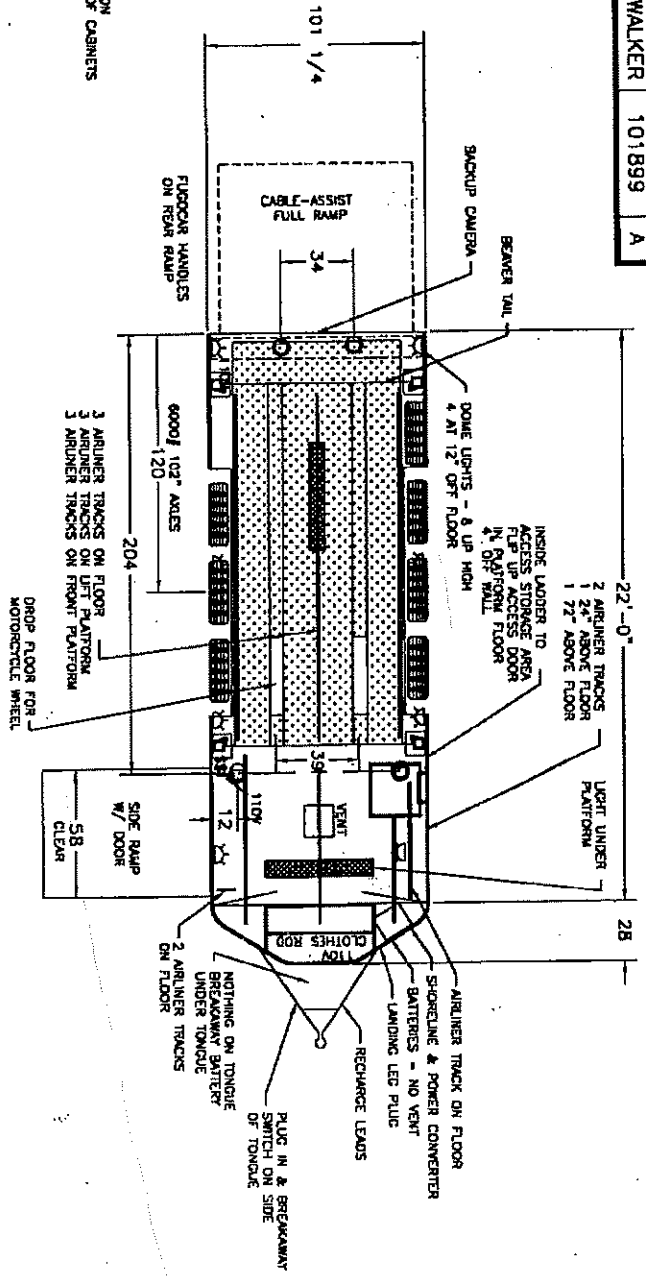
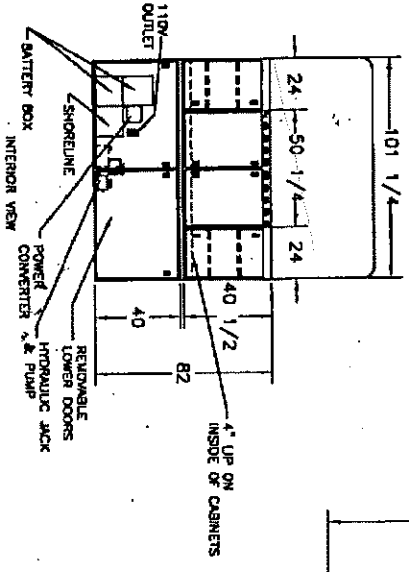
<PRINTED: 10/21/99 1ST: 09/22/99 prg LAST: 10/20/99 lsf >



TITLE
FLOOR PLAN FOR FEATHERLITE INC. 101 1/4" WIDE 23'-0" LENGTH COACH TRAILER CUSTOM
 CUSTOMER:
 SALESMAN:

TRAILER NUMBER YC030809	TRAILER CODE 4950-8623	DRAWN BY BRYAN WALKER	DATE DRAWN 101899	REV A
----------------------------	---------------------------	--------------------------	----------------------	----------

PLEASE REVIEW THIS PLAN CAREFULLY.
 MAKE CHANGES OR CORRECTIONS AND
 RETURN TO FEATHERLITE ENGINEERING.
 SIGNATURE _____
 DATE _____



101 1/4" WIDE
 7-WAY PLUG FOR SEMI - 7 STRAND CABLE
 TRICKLE CHARGE OFF HOT WIRE
 10'-10" INSIDE HEIGHT
 TAPED EXTERIOR SHEETS
 INSULATE ENTIRE INTERIOR
 LINE COMPLETE INTERIOR WHITE
 TREAD PLATE FLOOR
 STOPLIGHTS UP HIGH
 SIDE MARKER LIGHTS H3-45
 (2) STABILIZER JACKS AT REAR
 TUBE SLIDE TYPE
 FUGOCAR LATCHES BOTH RAMPS